

**PRELIMINARY ISSUE**  
THIS PLAN ISSUED FOR  
ADVANCE INFORMATION ONLY

NAD 83  
CENTERLINE ANGLE POINTS  
HUMBOLDT BAY  
(BAR & ENTRANCE)

PT	X	Y
C1	5936273.49	2172157.43
C2	5938147.59	2171508.43
C3	5940265.09	2170773.43
C4	5943553.39	2166602.43
C5	5944545.29	2166122.43
C6	5945376.39	2165957.23
C7	5946085.69	2166728.23
C8	5946886.39	2167508.33
C9	5947166.09	2168359.43
C10	5948049.39	2169917.43
C11	5949433.89	2170455.43
C12	5949233.79	2171119.43
C13	5950417.39	2171891.43
C14	5951329.89	2172546.23
C15	5952138.39	2173530.43
C16	5952999.89	2174705.43
C17	5953711.89	2180911.43
C18	5956236.79	2183159.43
C19	5957823.09	2186979.43
C20	5958152.59	2187513.43
C21	5958681.79	2187878.43
C22	5959291.79	2188978.43
C23	5959581.79	2189078.43

NAD 83  
CHANNEL ANGLE POINTS  
HUMBOLDT BAY (BAR & ENTRANCE)

PT	X	Y	PT	X	Y
1	5936596.69	2173163.63	24	5959081.79	2187578.43
2	5938385.39	2172268.83	25	5958421.69	2187381.23
3	5940404.09	2171258.93	26	5958007.99	2186903.83
4	5943566.09	2169944.43	27	5958425.99	2186303.63
5	5944727.49	2166468.93	28	5958165.59	218482.63
6	5945239.99	2166690.33	29	5958346.69	2181424.83
7	5945752.39	2166911.73	30	5958686.39	2180283.43
8	5946464.09	2167631.33	31	5958163.09	2174904.63
9	5946853.59	2168479.53	32	5958200.39	2173413.53
10	5947931.59	2170042.13	33	5958156.79	2172459.53
11	5949193.09	2170679.33	34	5958252.69	2171724.13
12	5949124.59	2171287.03	35	5948343.09	2170952.03
13	5950308.09	2172059.13	36	5948674.79	2170232.13
14	5951141.79	2172853.23	37	5948301.49	2169794.33
15	5951976.39	2173648.23	38	5947388.59	2169234.23
16	5952816.79	2174808.43	39	5946907.49	2167381.23
17	5955484.79	2180520.43	40	5946431.39	2166537.23
18	5956047.79	2183225.33	41	5945672.89	2165162.43
19	5957638.19	2187055.43	42	5945554.09	2162524.33
20	5957883.59	2187647.53	43	5944363.09	2162776.33
21	5958681.79	2188378.43	44	5944441.39	2162611.63
22	5959581.79	2189078.43	45	5940121.19	2170287.33
23	5959681.79	2188378.43	46	5937908.79	2170746.43
			47	5935950.29	2171151.43

**US Army Corps of Engineers**  
San Francisco District  
450 Golden Gate Ave  
San Francisco, CA 94102

**DISCLAIMER**  
The United States Government furnishes this information for the purpose of providing accurate and reliable data for the use of the user. The user is responsible for the results of any application of the data for other than its intended purpose. The user is responsible for the results of any application of the data for other than its intended purpose. The user is responsible for the results of any application of the data for other than its intended purpose. The user is responsible for the results of any application of the data for other than its intended purpose.

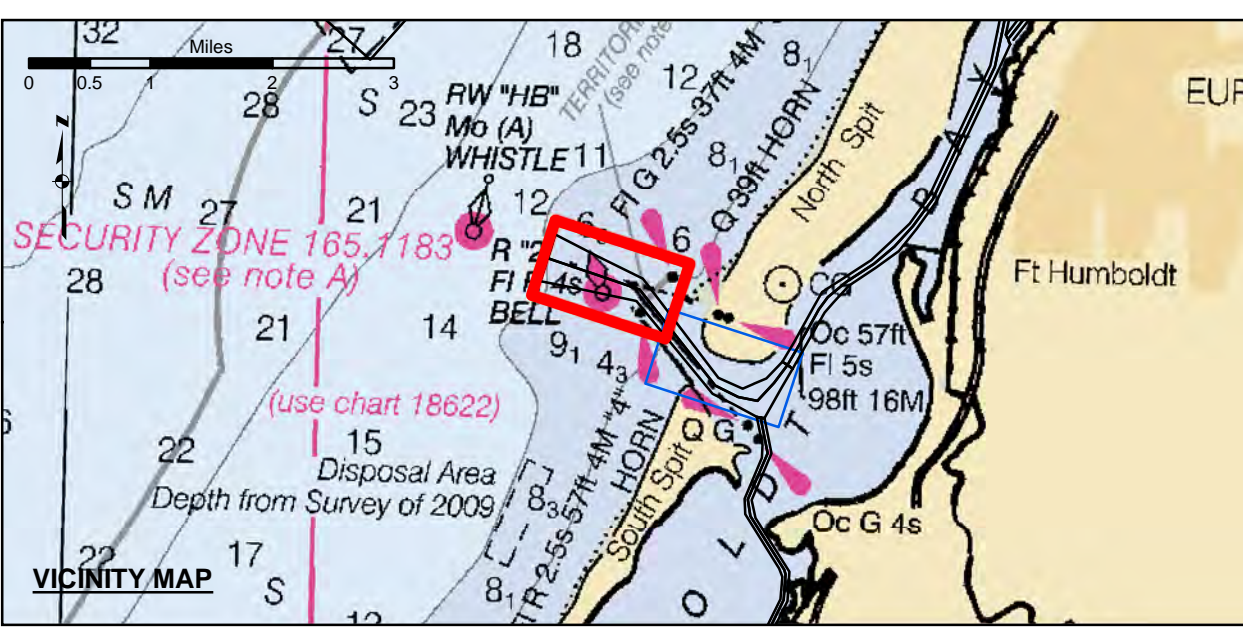
PREPARED UNDER THE DIRECTION OF  
**JOHN D. CUNNINGHAM**  
LT COLONEL, C.E. DISTRICT ENGINEER

Surveyed By:	Plotted By:	Checked By:	Drawn by:
Hydro Survey Team Leader	PDT	PDT	PDT
Chief, Hydro Survey Section			
Approver:	Chief, Construction Branch		

Chart Date: Jan 22, 2020  
Designed by: PDT  
Drawn by: PDT

**HUMBOLDT COUNTY**  
**HUMBOLDT BAY**  
**BAR & ENTRANCE CHANNEL**  
**CONDITION SURVEY**  
10-13 JANUARY 2020

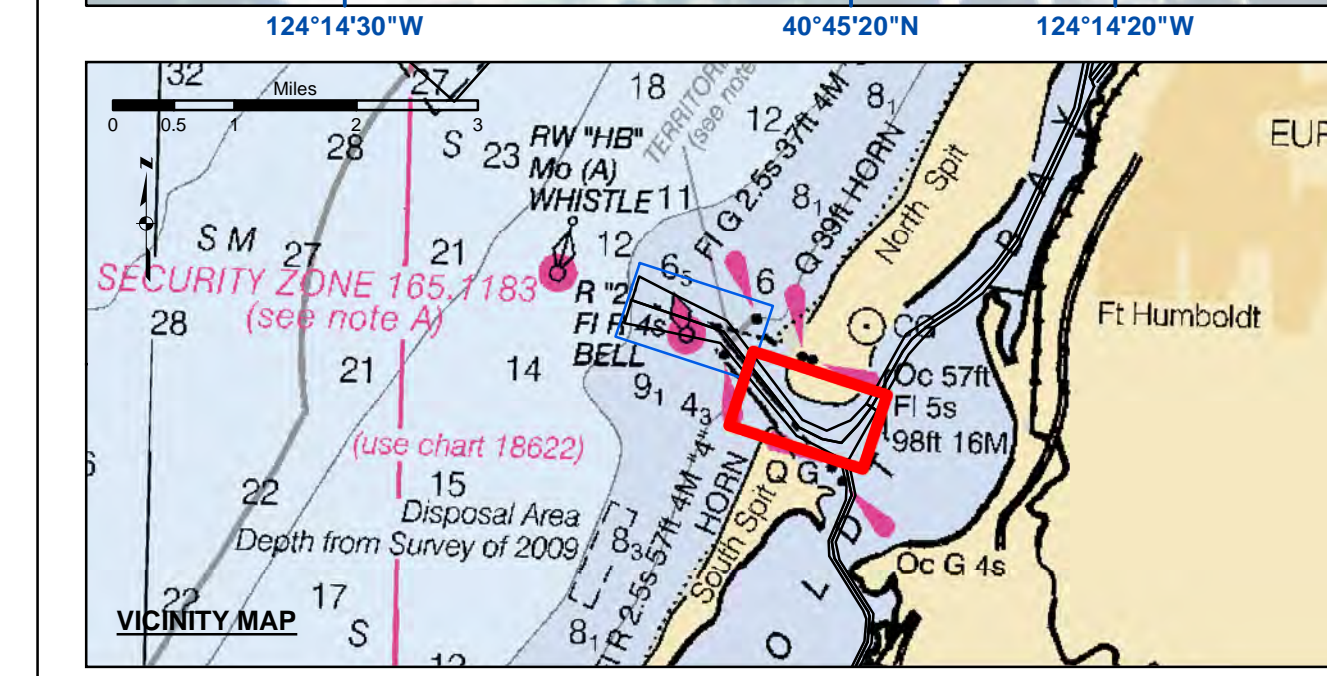
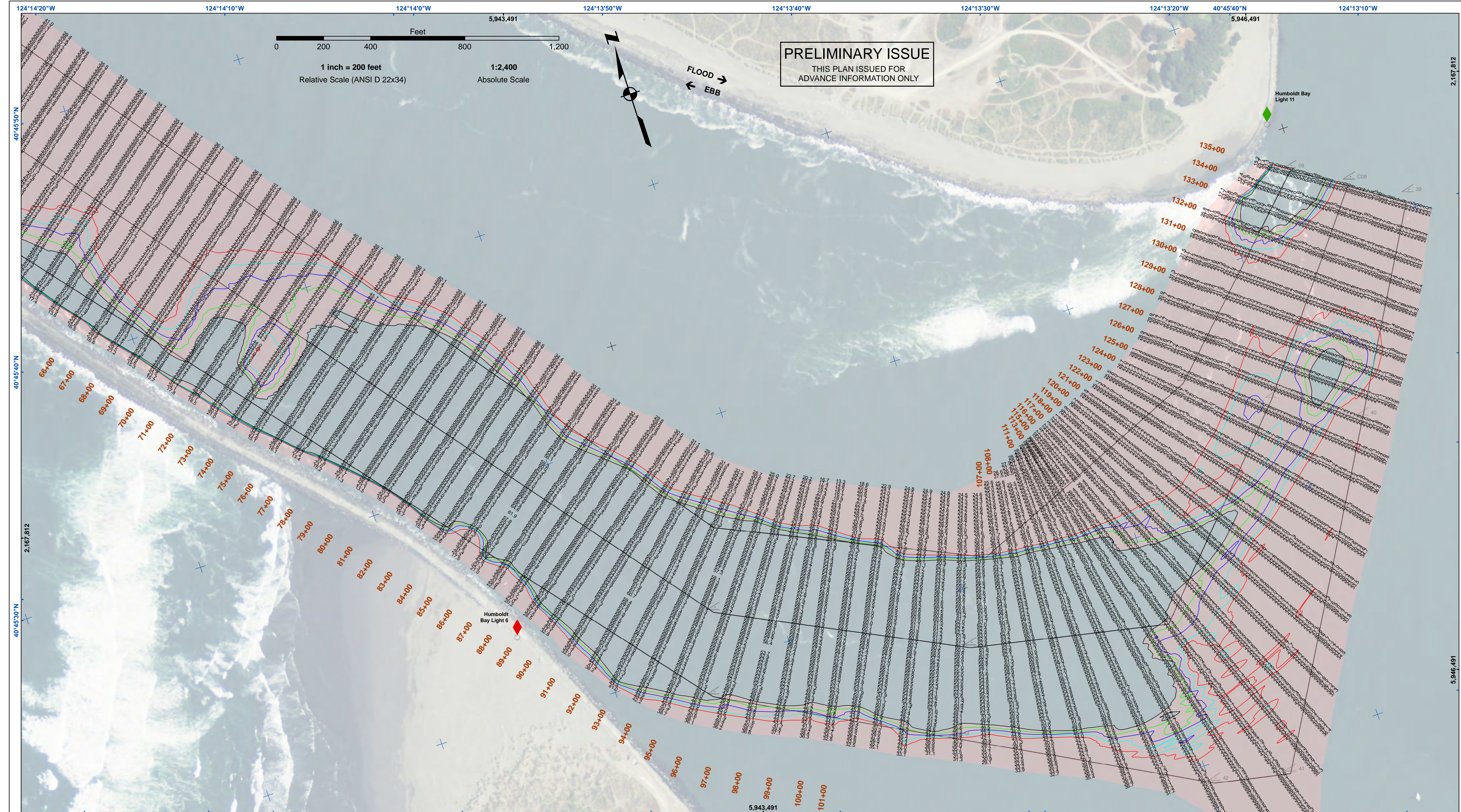
**Sheet Reference Number**  
1 of 2



Federal Navigation Channel	Beacon, General	Contours
Shoaling Area	Obstruction Point	-48
Placement Area	Navigation Buoy	-47
Anchorage Area	Navigation Buoy	-46
Wreck Area	Shoalest Sounding*	-45
Submerged Wreck		-44
Zone_I_Angle_Points		

**NOTES:**  
DRAWINGS NOT TO BE USED AS NAVIGATION. ONLY CHANNEL CONDITION AT DATE OF SURVEY. THE LOCATION OF ALL NAVIGATION AIDS ARE BASED ON INFORMATION PROVIDED BY THE U.S. COAST GUARD. BUOY LOCATION REPRESENT THE POSITION OF THE SINKER ONLY.  
SURVEYED BY THE CORPS OF ENGINEERS.  
SOUNDINGS WERE TAKEN BY FATHOMETER AND ARE SHOWN TO THE NEAREST TENTHS OF A FOOT.  
SOUNDINGS ARE BASED ON THE DATUM OF MEAN LOWER LOW WATER AT THE LOCALITY.  
PLANE GRID AND COORDINATES ARE BASED ON THE STATE OF CALIFORNIA COORDINATE SYSTEM, LAMBERT CONFORMAL PROJECTION, ZONE 1 NAD 83, CALIFORNIA, AS DESCRIBED IN SPECIAL PUBLICATION NO. 235, PUBLISHED BY THE NATIONAL OCEAN SURVEY.  
PROJECT DEPTHS ARE AS FOLLOWS:  
BAR & ENTRANCE CHANNEL = 48 FEET  
NORTH BAY, SAMOIA TO MILE 5.0 & = 38 FEET  
EUREKA CHANNEL, FIELDS LANDING CHANNEL & MILE 5.0 TO "N" STREET = 26 FEET

1:00 INDICATES THE NUMBER AND BEGINNING OF A LINE OF SOUNDINGS.  
SOUNDINGS ARE BASED ON TIDE GAUGES REFERENCED TO U.S.C. & G.S.  
Vertical and Horizontal Control:  
NOAA Station: 941 8767 - North Spit, CA  
Benchmark:  
NO 11 1940 (PID: LV0359)  
MLW Elev: 4.251m  
Tides:  
RTK GPS, using GEOD12a and VDATUM  
RTK elevations calibrated at 10.0ft nail at Coast Guard Station Humboldt Bay  
Position:  
RTK Positions



Federal Navigation Channel	Beacon, General	<b>Contours</b>
Shoaling Area	Obstruction Point	-48
Placement Area	Navigation Buoy	-47
Anchorage Area	Navigation Buoy	-46
Wreck Area	Shoalest Sounding*	-45
Submerged Wreck		-44
Zone_I_Angle_Points		

NOTES:  
 DRAWINGS NOT TO BE USED AS NAVIGATION. ONLY CHANNEL CONDITION AT DATE OF SURVEY. THE LOCATION OF ALL NAVIGATION AIDS ARE BASED ON INFORMATION PROVIDED BY THE U.S. COAST GUARD. BUOY LOCATION REPRESENT THE POSITION OF THE SINKER ONLY.

SURVEYED BY THE CORPS OF ENGINEERS.  
 SOUNDINGS WERE TAKEN BY FATHOMETER AND ARE SHOWN TO THE NEAREST TENTHS OF A FOOT.  
 SOUNDINGS ARE BASED ON THE DATUM OF MEAN LOWER LOW WATER AT THE LOCALITY.

PLANE GRID AND COORDINATES ARE BASED ON THE STATE OF CALIFORNIA COORDINATE SYSTEM, LAMBERT CONFORMAL PROJECTION, ZONE 1 NAD 83, CALIFORNIA, AS DESCRIBED IN SPECIAL PUBLICATION NO. 235, PUBLISHED BY THE NATIONAL OCEAN SURVEY.

PROJECT DEPTHS ARE AS FOLLOWS:  
 BAR & ENTRANCE CHANNEL = 48 FEET  
 NORTH BAY, SAMOIA TO MILE 5.0 & = 38 FEET  
 EUREKA CHANNEL, FIELDS LANDING CHANNEL & MILE 5.0 TO "N" STREET = 26 FEET

1:00 INDICATES THE NUMBER AND BEGINNING OF A LINE OF SOUNDINGS.  
 SOUNDINGS ARE BASED ON TIDE GAUGES REFERENCED TO U.S.C. & G.S.  
 Vertical and Horizontal Control:  
 NOAA Station: 941 8767 - North Spit, CA  
 Benchmark:  
 NO 11 1340 (PID: LV0359)  
 MLLW Elev: 4.251m

Tides:  
 RTK GPS, using GEOID12a and VDATUM  
 RTK elevations calibrated at 10.0ft nail at Coast Guard Station Humboldt Bay

Position:  
 RTK Positions

**US Army Corps of Engineers**  
 San Francisco District  
 450 Golden Gate Ave  
 San Francisco, CA 94102

**DISCLAIMER**  
 The United States Government furnishes the data represented by this drawing for the purpose of providing advance information only. The data is not intended for use as a basis for any other purpose. The user is responsible for the results of any application of the data for other than its intended purpose. The user is responsible for the results of any application of the data for other than its intended purpose. The user is responsible for the results of any application of the data for other than its intended purpose.

Prepared Under the Direction of <b>JOHN D. CUNNINGHAM</b> LT COLONEL, C.E. DISTRICT ENGINEER	Chart Date: Jan 22, 2020
Subject: Hydro Survey Team Leader	Designed by: PDT
Recommended: Chief, Hydro Survey Section	Plotted by: PDT
Approved: Chief, Construction Branch	Checked by: PDT
	Drawn by: PDT

CALIFORNIA  
 HUMBOLDT COUNTY  
**HUMBOLDT BAY  
 BAR & ENTRANCE CHANNEL  
 CONDITION SURVEY**  
 10-13 JANUARY 2020

**Sheet  
 Number  
 2 of 2**